



LYRIC HOUSE

ST PETER PORT

GY1

5,691 sq ft of office accommodation available to let



LYRIC HOUSE

Lyric House is a well configured office building in the heart of St Peter Port. It is available immediately and offers open plan accommodation with the potential for additional fit out.





SPACE AVAILABLE

Floor	Sq Ft	Sq m	Status
First	2,850	264.7	Available
Second	2,841	263.9	Available
Total	5,691	528.6	-

TERMS

Lease terms and quoting rent on application





SPECIFICATION

Suspended ceilings

LED lighting

Carpet-tiled floors

Perimeter trunking for power and IT services

Kitchen and WC facilities

Daikin heat recovery VRV air conditioning system

12 parking spaces





NEIGHBOURHOOD

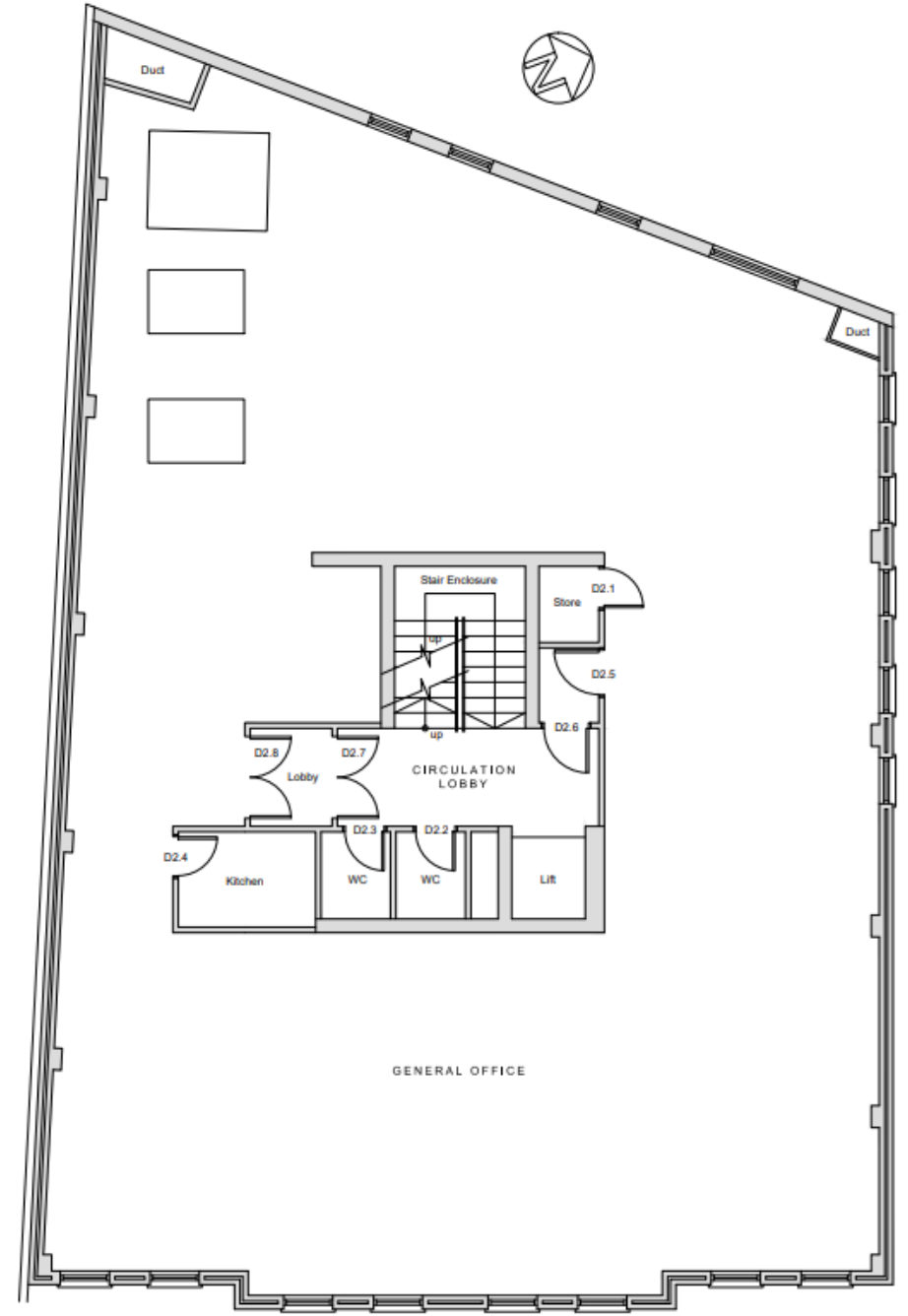
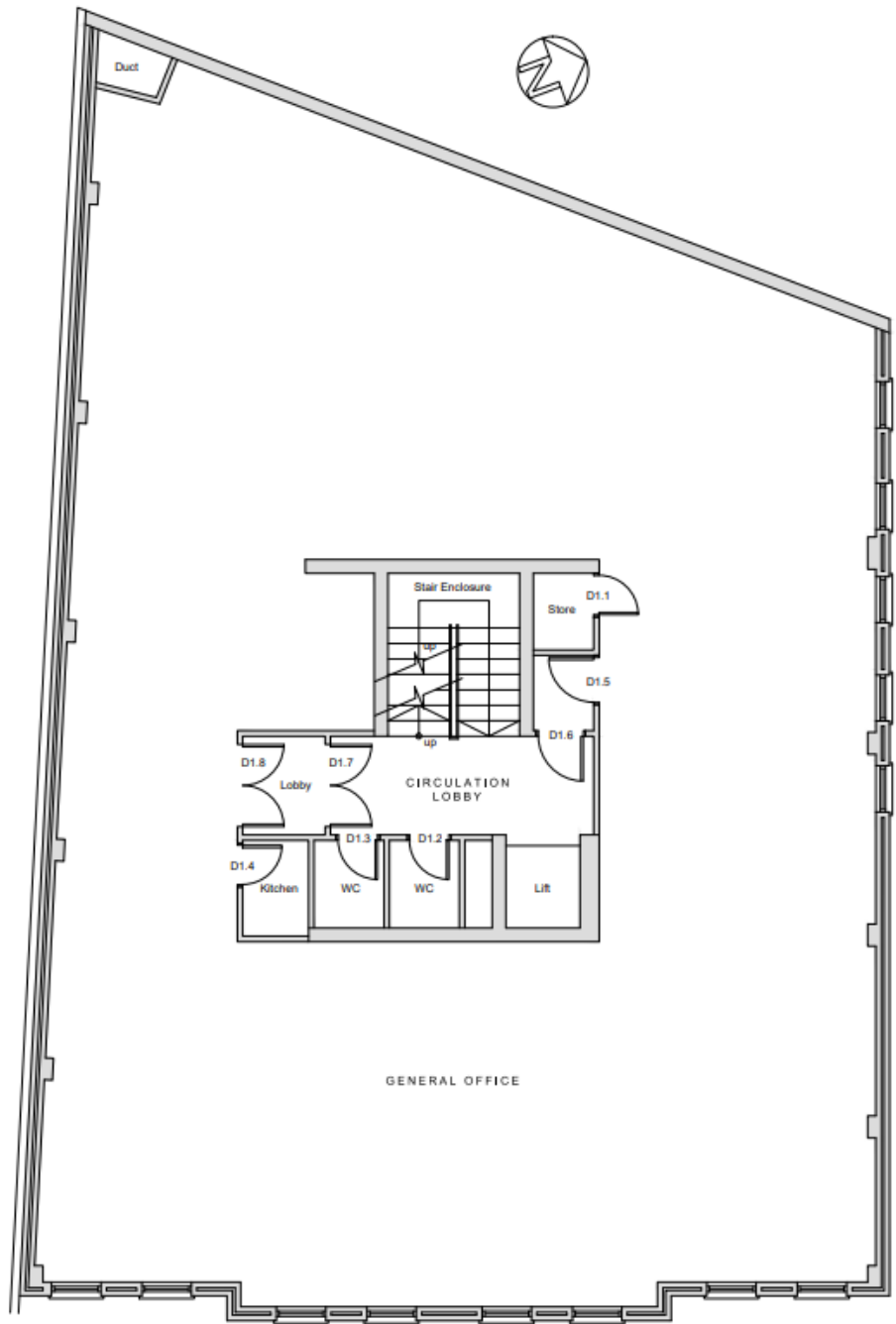
New Street is in the heart of St Peter Port's old legal quarter. Local occupiers include Ravenscroft, Trinity Chambers, Vistra, Living Room and Walkers.

St Peter Port is Guernsey's capital and is packed with life. Housing the most popular restaurants, bars and retail on the island, Lyric House has the benefit of being a 2 minute walk to the High Street with easy access to the array of amenities it has to offer.



Digimap Address Locator





MAWSON COLLINS

VIEWING

Mike Collins
Managing Director
mike@mawsoncollins.com
07781 142000



MAWSON COLLINS

Lifestyle House,
L'Islet Crossroads,
St Sampson,
Guernsey, GY2 4SR



+44 (0) 1481 244244

